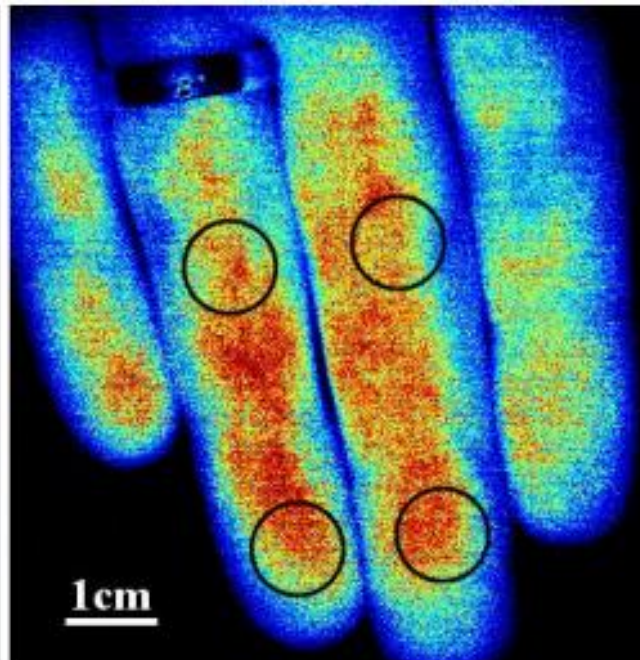
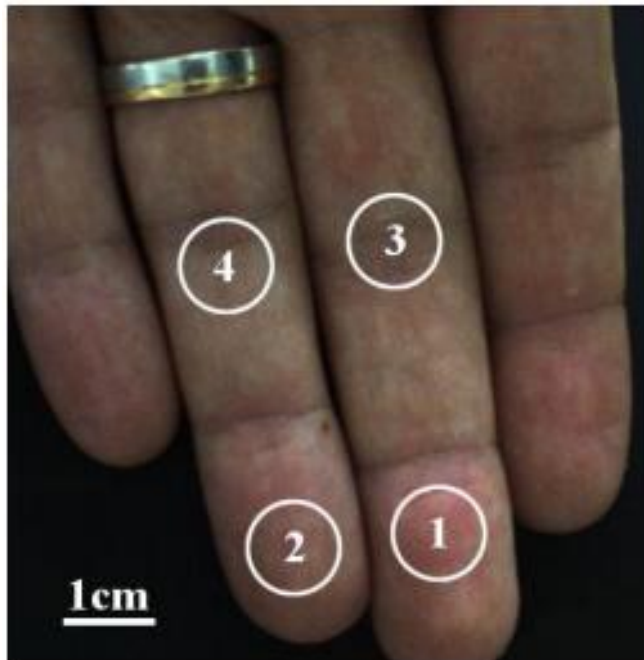




## Visualizing Microcirculation

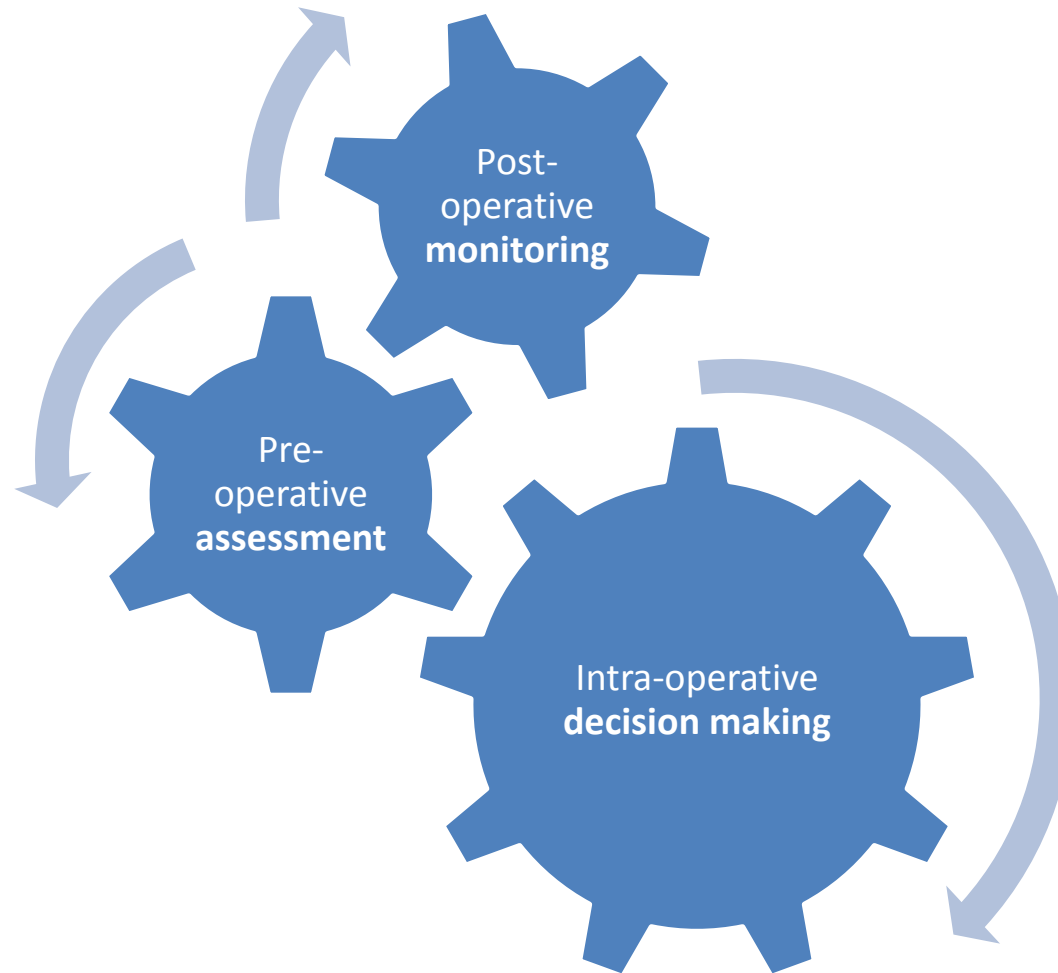
### EasyLDI for Hand Surgery

Finger replantation, frost bite & degloving injury



# Where to use EasyLDI?

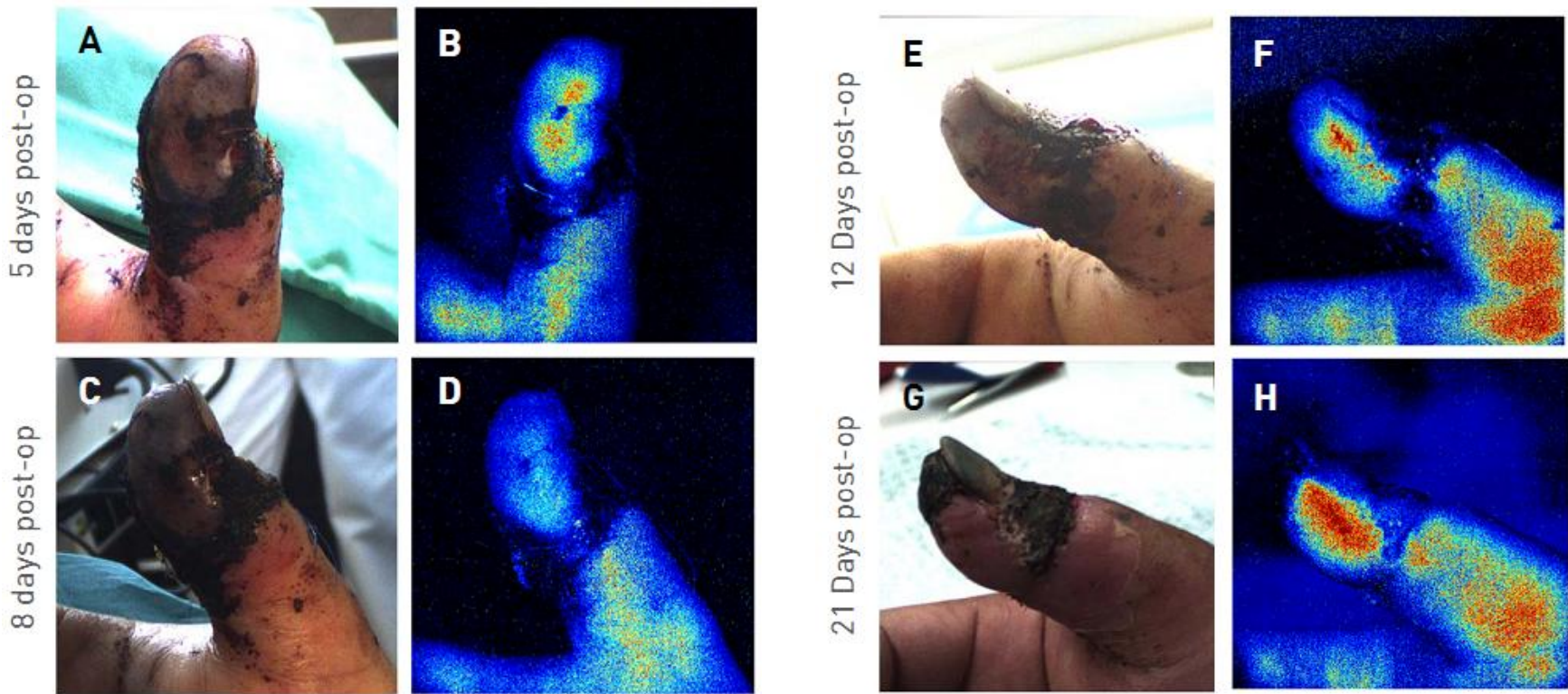
---



# Finger Replantation

... or: Will the phalange survive?

**Example:** Clinical assessment unsure, Aimago confirms perfusion

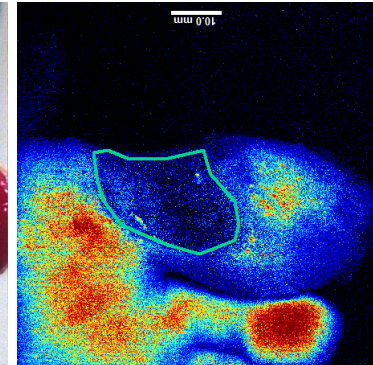
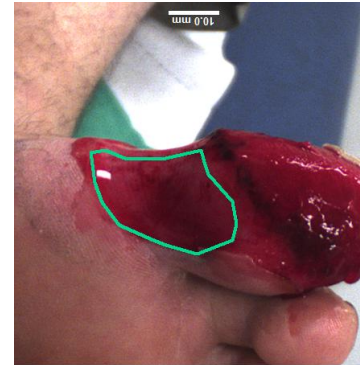
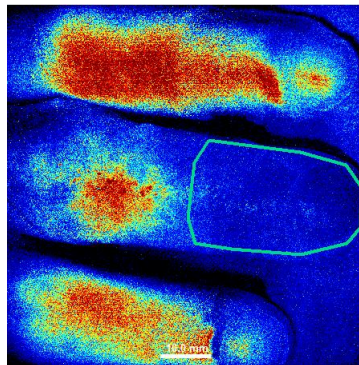


# Frostbite Injury

## Case study published in British Medical Journal

- Monitor healing in a contact-less and non-invasive way
- EasyLDI confirms amputation levels on finger and healing on toe

Day 4



Day 5

